

IN THE

ZONE

K CLOSED

## Close Call in Action!

Flagger Force recently launched a new Close Call program, which is being introduced at our current Safety Seminars. This new project aims to identify hazards and near misses in order to prevent incidents from occurring and to document these situations on the spot so we can all learn from and prevent incidents in the future.

One of our crews in King of Prussia experienced a near-deadly close call in August. Advanced Crew Leader Matt Kline and Crew Member Omar Calderon (his first week on the job), conducted their Stretch and Flex Program and discussed the importance of watching each other's backs while on the job. Little did they know, they put both pre-job safety strategies into practice within a matter of minutes and it saved their lives.

With their Flagger Force truck parked on the side of the road, and safety lights flashing, Kline began setting advanced warning signs and he instructed Calderon to watch his back for oncoming traffic. Moments later, a 93-year-old driver, blinded by the early morning sun, drove directly toward the back of the pickup and our Flagger Force team members.

**Calderon yelled out to Kline just in time to dodge away from the driver, avoiding a hit that could have been deadly.**

The driver struck the pick-up, and if the employees had not jumped out of harm's way, they would have been painfully pinned between the vehicles.

**Congratulations to Matt Kline and Omar Calderon for living out our Safety-Driven passion!** If you experience a close call while on the job with Flagger Force, please fill out a Close Call form (available in a FF truck or at our branches) and you will be rewarded with a "Cones are replaceable, PEOPLE ARE NOT" t-shirt and gift card to the convenience store of your choosing! **Thank you again to Matt and Omar for setting the example.**

--- Safety • Driven. ---



**FLAGGER  
FORCE®**  
Traffic Control Services

**Smoking + Roadwork = DANGER ... on page 2**

**Safety Glasses ... on page 3**

**New Payroll Mastercard & Online Paystubs ... on page 4**

**Deer in Headlights ... on page 5**

**Kudos! ... on pages 6 & 7**



# Smoking + Roadwork = DANGER

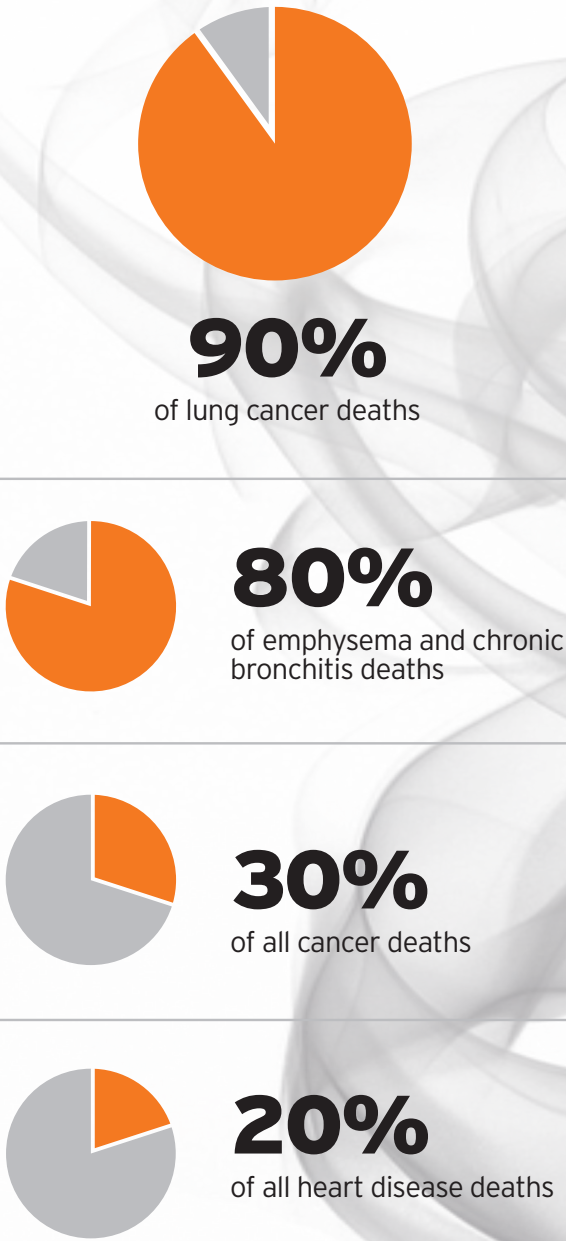
**It's common knowledge that smoking is bad for your health.** But did you know that construction workers that smoke, or those that inhale secondhand smoke from coworkers, are at an even greater risk due to the combined exposure of tobacco with airborne toxins on the work site? When your body has to deal with tobacco smoke as well as the dust and other chemicals at construction sites, your risk of getting cancer, lung disease and other serious illnesses is much higher. The more toxic exposure you have, the greater your risk since tobacco damaged lungs are not as good at protecting your body against other toxic substances from the roadway, such as asphalt, coal tar, treated wood and carbon monoxide.

Studies have shown that tobacco smoke (inhaled by the smoker or secondhand) contains hydrogen cyanide, a chemical that paralyzes the cilia, which are tiny hairs in your airway that help the lungs filter out toxins. Furthermore, you may not feel sick from a small amount of exposure to carbon monoxide from cars on the road, but when you combine small daily exposure to this toxin with the increased carbon monoxide found in cigarettes, you'll start to get headaches, become abnormally tired and the toxin will eventually weaken your heart.

## Secondhand Smoke Causes:

- Inhalation of 20 times more carcinogens than are inhaled by the smoker
- Over 53,000 deaths of nonsmokers each year (3rd leading preventable cause of death)
  - Ear infections and respiratory problems like asthma in children
  - Linked to Sudden Infant Death Syndrome in babies

## Smoking Causes:



**Smoking kills more Americans each year than alcohol, cocaine, crack, heroin, homicide, car crashes, fires and AIDS combined!**

## Chewing Tobacco is NOT A SAFE ALTERNATIVE

Chewing tobacco causes cancer of the mouth, larynx and esophagus. "Chew" contains arsenic, cyanide, lead and benzene, plus fiberglass and dirt which cause abrasions on the skin to allow the tobacco to enter the bloodstream more readily.

**Flagger Force employees** are not permitted to use tobacco while on the clock or inside a Flagger Force vehicle. Our offices are tobacco-free at all times, except in designated areas outside of the buildings. Our Corporate Headquarters is a tobacco-free campus and tobacco use is not permitted inside or outside the building.

**Flagger Force is ready to help employees break their addiction to tobacco.** Our new Employee Assistance Program offers confidential tools, resources and help with quitting this dangerous addiction (or any other addiction).

Employees, call **888-312-FLAG (3524)** and ask for our EAP hotline number to quit today.



## Safety Glasses

According to Prevent Blindness America, each year more than 700,000 Americans injure their eyes at work, and another 125,000 injure their eyes at home.

**Proper protective eyewear can prevent 90% of vision injuries according to experts.**

All professional safety glasses should conform to a higher standard of impact resistance than regular eyeglasses. This higher standard applies to both the lenses and the frames of safety glasses and goggles. To verify if your eyewear is up to code, look for the ANSI "Z-87" mark, usually found on the frame or lenses of the glasses.

How are safety glasses tested for impact? According to AllAboutVision.com, "The "drop ball" test determines the basic impact safety classification for lenses. In this test, a one-inch diameter steel ball is dropped onto the lens from a height of 50 inches. To pass, the lens must not crack, chip or break. All glass safety lenses must undergo this test. For plastic safety lenses, however, only a statistical sample of a large batch of lenses needs to be tested. Safety frames must also pass a flammability-resistance test, a corrosion-resistance test and other durability tests."



## + High Impact Approved +

In high impact testing, a high velocity test is performed by shooting a quarter-inch diameter steel ball at the lens at a speed of 150 feet per second. To pass, the lens must not crack, chip or break, and it must not become dislodged from the lens holder. Look for the "+" mark to determine if your glasses passed the high impact test.





# New Payroll Mastercard & Online Paystubs

As you read in the recent paycheck mailer we sent out, and as promised in our recent safety seminars, we are rolling out two exciting new programs during September and October that will offer new benefits to your weekly payroll.

The Payroll Mastercard will give employees without a bank account the ability to access their funds via ATM or credit/debit transactions starting at 12:01am each Friday. The Payroll Mastercard functions similarly to a debit card and eliminates waiting for your check to arrive by mail and taking it to a bank or check cashing facility each week. It also gives you peace of mind,

knowing your money is protected by Mastercard's Fraud Protection Program, and flexibility with the option to order an additional card for family members. If you have questions, please call our corporate office at 888.312.FLAG.

As of October 4th, all employee paystubs will be provided digitally at [www.totalpayroll.com](http://www.totalpayroll.com). Visit this site before that time to setup your account - you'll need a recent paper paystub and our company code: **F488** to enroll. The new digital paystub system gives employees instant access to weekly hours paid/total pay amount/deductions as soon as they are available on Fridays at 12:01am. Additionally, you can access reports of paid time off earned, pay history for previous pay periods, past W-2 forms and more. The digital system also cuts down on our weekly paper usage. We're excited to offer this new, tech- and eco-friendly system to our employees!

If you have additional questions about either of these new programs, please call our corporate office at 888.312.FLAG (3524).

## Payroll Questions? Ask Your Branch!

Questions about a recent paycheck? Need to correct an error in hours worked? Please call your branch instead of the accounting/payroll department. We now have trained staff at your local branch that can help answer your questions and make changes to your payroll, if applicable. If someone at your branch cannot answer your question, they will get an answer directly from accounting for you.

## Attention FF Drivers:

**Traffic Violations:** Please note that traffic and parking violations (including speeding) issued by county, city or state officials are the responsibility of the driver operating the vehicle at the time of the violation. This includes speed violations captured on camera. Please report any violations received to your branch office immediately. Any official tickets or violations, whether received in the mail or delivered by employee, will be evaluated individually by branch management to determine course of disciplinary action and financial responsibility on behalf of the employee.

**Residential Parking Permits:** If you live in an area that requires a residential parking permit for your company vehicle, please contact your branch office for assistance.



# Deer in Headlights



Pennsylvania ranks 5th in the nation in reported deer strikes; PA drivers have a **1 in 76** chance of being involved in a motor vehicle accident involving deer

Maryland drivers have a **1 in 114** chance of being involved in a motor vehicle accident involving deer

A front end collision with a deer can cause serious **damage to a vehicle and injuries** or death to the driver and passengers

Deer-vehicle collisions are three times more likely to occur on a day in **November** than they are on any day between **Feb. 1 and Aug. 31**  
October is the second most likely month for a crash involving a deer and a vehicle; December is third

The average property damage cost of deer strike related incidents

## Tips to Reduce the Odds of a Deer Collision

- Keep in mind that deer generally travel in herds – if you see one, there is a strong possibility others are nearby, so slow down!
- Be aware of posted deer crossing signs; these indicate active deer crossing areas
- Remember deer are most active in the early morning and late evening
- Use high beam headlights as much as possible at night to illuminate the areas from which deer will enter roadways
- Scan the road ahead as well as to the sides as you travel through rural areas; look for the animals' reflective eyes shining back at you
- Don't rely on car-mounted deer whistles

## If a deer collision seems inevitable

- Don't try to swerve out of the way, you could lose control of your vehicle or veer into the path of an oncoming vehicle
- Brake as much as possible before striking the animal
- Let off the brake at the last moment before impact to propel the deer away from your vehicle and avoid injury to driver and passengers or further vehicle damage



YOU'RE  
MAKING  
US BLUSH!

KUDOS

I met one of your flaggers on an Aqua site two weeks ago. He was very polite and professional, but clearly unaccustomed to being thanked for his role in protecting the lives of a client crew. He accepted my appreciation graciously. In many ways, your folks play the role of shepherd, warning of danger, keeping the danger away from the 'flock' and offering a degree of comfort to the crew so they can focus on the work at hand. We continue to count on competent professionals like Flagger Force to help us live out our values and commitments. Hope all is on track for a great year in 2013! - Keith A. Brubacher, President of Brubacher

**Nikkita Bland** and **Francis Walter** both did a great job. I could tell it was a set up they weren't quite used to but they learned quickly and did very well the rest of the day. It was nice having them today. - Foreman for American Paving Fabrics

**Antwan Mabrey** and **Dominic Schiano** did an exceptional job for our group and I'd like them back all next week. - Brian Doloinger, Foreman for UGI West Region

I received a call from a motorist today and overheard a conversation between the motorist and one of our employees, **Paul Middleton**. Paul did an outstanding job of handling a difficult situation in which a driver was confused by the work zone and drove into the wrong lane. Paul calmed the driver down and presented a very professional image of our company to the motorist, while safely navigating him out of harm's way. - Ashley Emerich, Flagger Force Corporate Receptionist

The team you sent me (**Glenn Stitt**, **James Shaffer**, **Bill Ohmacht**, **James Kaiser**, **Sandy King**) did a great job and everything ran smoothly! - Joe Mucka, Foreman, Cable Services

My heart goes out to **Maxine Swank** and her family regarding their recent fire that I read about. Thank you for continuing to send me updates about your employees and your company via this newsletter. I am very proud of you and your company. - Rich Bunker, ATSSA Master Instructor

Everyday I drive the same route and I often pass a Flagger Force truck (identified by our GPS as driven by **Mike Krimmel**). The driver is always conscientious, following the speed limit, being careful when passing and punctual since I see him early each morning. Please give compliments to the driver from the little blue car that always zips by. - Colleen McIntyre

Knibbs, Motorist, submitted compliment on Facebook

**Anthony Puddu** and **Jason Vasil** were very professional and good workers. Thank you! - Foreman, UGI Central - Frackville

**Jesse Mendiola** has been with Flagger Force for just two months, but already he takes the time and initiative to teach new crew members on job sites. Fellow employees say they enjoy working with him. Since becoming a Crew Leader, he has been personally requested by numerous foremen for his excellent work. - Stephen Weirauch, Baltimore Assistant Branch Manager

Great job to **Andrew Le**, **Lynn "Scott" Keenen** and **Joseph Torres**. Thank you for keeping us safe! - Foreman, UGI Reading

**Jeffrey Motter**, **Toni Uber**, **Brandi Holt**, **Rene Gonzalez Jr.** and **Kevin Furman** have done an OUTSTANDING job for me. I'd like to request them back next week. - Steve Baumgardner, Foreman for UGI/Henkels & McCoy

My partner today, **Steve Smith**, is one of the best Crew Members I've worked with in a long time. He is doing a great job, especially for a new hire! - Doug Moyer, Flagger Force Advanced Crew Leader in King of Prussia

**Saleem Brown** and **Patricia Covert** have been doing an awesome job! I am very happy with their performance. - Chris DeAntonio, Foreman, Utility Line Services

Two of your employees (**Michael Chieffo** and **Marcey Fronczak**) went out of their way to help a driver in need of medical attention today. They noticed a car parked on the side of the road. Inside was an incoherent driver, slumped over the steering wheel, and a child in the back seat. When the driver would not respond to the crew, they contacted 911 for emergency help. They may have saved the life of the driver and the child. - Steve Brensinger, Foreman, PPL Sinking Spring

The video we watched of **Alice Ward** in our Summer Seminar was very emotional. I have worked alongside her on many occasions. Thank you for sharing her story and for the opportunity we have at Flagger Force. - Mic Miller, 5 year Flagger Force Crew Member in King of Prussia



"**Jeff Evans** pulled up to the Flagger Force parking lot last week with the shiniest truck of them all. He said he hand waxes his truck once a week and takes pride in everything he does. Boy, were we impressed! Kudos Jeff!" - Jenn Harmon, Field Superintendent

My partner, **Marvin Smith** had a great work ethic out on the job site today. I was really thankful for him, especially when he made sure I got a break during the day. - Donna Fields, Crew Member in Baltimore

Today you sent me the best crew (**Thomas Fisher**, **Dave Pearson**, **Jose Matta**, **James Raber**, **Warren Berstler**, **Phillip Samuels**) I've ever had from Flagger Force. We were working on a large scale project up in Wilkes-Barre Township and they set the best pattern I've ever seen. - Joe Hoffman, Foreman, UGI Wilkes-Barre

**Bryon Bonser** and **Thomas Hamilton** did a great job!! I'd like to have them back everyday! - Foreman, PPL Allentown

Today I worked with **Wallace Butler** from the Harrisburg office on a job site in Lancaster, PA. We were using the facilities at a local gas station and another patron needed help putting air in her vehicle's tire. Mr. Butler kindly offered his assistance and I wanted to make you aware of his good deed. - Jen Bezts, Flagger Force Crew Leader in King of Prussia

A Flagger Force crew and their client, Penn Line Services were evaluated by PICS, an independent auditing firm that prequalifies suppliers to check for safety and compliance standards. The audit team checked out the pattern set by **Jeff Matherly** and **Daren Roush** and commented, "These Flagger Force folks are doing a fine job." - Reported by Jeff Matherly, Flagger Force Crew Member from Harrisburg

**Mike Shadeck** was my lead on the job site today and, as a new hire, I appreciated how much he taught me today and the respectful manner in which the information was provided. Thanks Mike! - Damien Garret, Crew Member from Harrisburg

**Jesse Mendiola** is doing a wonderful job out here. His setups are spot on and I am extremely pleased with Jesse's work. - Joe Sokolis, SHA County Inspector for Anne Arundel County

**Brandon Fizz** and **Steven Smith** did an excellent job today, thank you! - Foreman, Danella Line

**Emil Sorensen**, a new Crew Leader, called the office with concerns about a job site and the need for a flashing traffic light. When I called him back, just a few minutes later, he had already taken care of it by contacting the local township directly and citing the proper typical needed for his unique job needs. Fantastic job Emil! I am thrilled we are guiding and coaching our employees to take control out in the field! - Jenn Harmon, Field Superintendent for King of Prussia

**Brian Mickiewicz** and **Doug Moyer** did a great job on our site. As a new client, I was very happy and I will definitely be calling again in the future. - Staci Hagenbaugh, Neighborhood Film Company

**Bruce Heckert** and **Sean Farrell** were the best crew I've had with Flagger Force. They were awesome and I would love to have them back for future projects, if possible. - Mike Fisher, Foreman, Midland Asphalt Materials

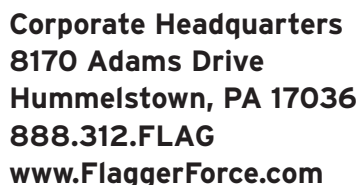
I want to say again how great the crew (**Derrick Terry**, **Arline Paczewski**, and **David Diano**) was that you sent us in such short notice. Overall, they were a great pleasure to work with and I was very impressed. - Scott Reisinger, Transportation Coordinator, Environmental Recovery Corporation

The crew in LaVale, MD (**Dave Wildey** and **James Eisentrout**) did a great job with their setup today. Be safe out there! - Adrian Weems, submitted compliment on Facebook

I want to thank you, **Ashley Hume**, and your crew (**Jason Goins**, **Richard Siegman**, **Tyler Upshur**, **Joseph Hodges**) for doing such an outstanding job for us regarding the recent road closure for BGE. The Overhead Crew Leader said everything went perfectly and it's the first time he actually got to work a job without having to wait on someone or correct a situation of some sort. He's a meticulous OCL, so you can consider this a huge compliment! Thank you so much for coming through on such a challenging job for us! - Kris Wineke, Orderer for BGE

**David Barrick** did a wonderful job for me over the past two and a half months. He was very dependable and efficient while always abiding by the safety guidelines of the company. Major kudos to David, and I will definitely be requesting him back in the future! - Kaylor Jackson, Foreman for PPL





Want to receive this via email?  
Email [subscribe@flaggerforce.com](mailto:subscribe@flaggerforce.com).

**PECO Timesheet Change** In the past, PECO crews have been responsible for filling out and submitting the time sheets of our employees that work on PECO jobs. We have now changed our policy and are requesting Flagger Force employees to also fill out a Flagger Force timesheet for their hours worked on PECO jobs. This will aid our accounting team in ensuring the accuracy of your pay. Thank you for your assistance in this change.

**ID Cards in Hot Vehicles** We have noticed that a number of employees are having issues with the ink coming off of their FF ID Cards when left in a hot vehicle. To prevent this issue, please remember not to leave your Flagger Force badge in your vehicle on warm days. If you need a replacement card due to this problem, please contact your branch office and a new card will be sent to you.

# TIME REPORT

CONTRACTOR \_\_\_\_\_

PREPARED BY \_\_\_\_\_

FLAGGER FORCE ORDER # \_\_\_\_\_

REPORT TO LOCATION ADDRESS \_\_\_\_\_

WORK LOCATION ADDRESS (if different) \_\_\_\_\_

DATE (MM/DD/YY) \_\_\_\_\_

LAST #  
SIGN#

NAME \_\_\_\_\_

TRUCK # \_\_\_\_\_

START  
TIME

MEAL  
BREAK

END  
TIME

REG. TIME  
HRS.

OVERTIME  
HRS.

TOTAL  
HOURS

CREW SIGNATURE \_\_\_\_\_

TOTAL ▶

WORK ORDER  
OR  
PROJECT # \_\_\_\_\_

MAN  
HOURS

VEH.  
HOURS

JOB  
SPECIFIC # \_\_\_\_\_

**PROJECT SPECIFIC INFORMATION (must select at least one category)**

- ☐ NO ADDITIONAL EQUIPMENT UTILIZED
- ☐ SPECIALTY EQUIPMENT (CHECK ALL THAT APPLY)
  - ☐ ARROW PANEL (Unit #) \_\_\_\_\_
  - ☐ TRUCK MOUNTED ATTENUATOR (Unit #) \_\_\_\_\_
  - ☐ STAKE BODY TRUCK (Unit #) \_\_\_\_\_
  - ☐ SPECIALTY SIGNAGE, STANDS, OR OTHER EQUIPMENT (ITEMIZE): \_\_\_\_\_

## Pre Job Brief

- Did you walk down the job site with client representative? Yes ☐ No ☐
- Did you determine the maximum work space required by client? Yes ☐ No ☐
- Were all job hazards identified with the client representative? Yes ☐ No ☐ What were the top hazards?
- What physical application(s) did you reference for this work zone? \_\_\_\_\_
- Was a relief plan established with the client representative? Yes ☐ No ☐ If no, why not? \_\_\_\_\_
- Did the client hold a pre job brief? Yes ☐ No ☐ Did you sign the client pre job brief document? Yes ☐ No ☐ State: \_\_\_\_\_

CREW PERFORMANCE COMMENTS: \_\_\_\_\_

REPORT TO LOCATION ADDRESS \_\_\_\_\_

MONTH \_\_\_\_\_

DAY \_\_\_\_\_

YEAR \_\_\_\_\_

FLAGGER FORCE ORDER # \_\_\_\_\_

EMPLOYEE NAME \_\_\_\_\_

SOC. SEC. # \_\_\_\_\_

COMPANY NAME \_\_\_\_\_

CUSTOMER JOB # \_\_\_\_\_

REPORTING PERIOD

SUBMIT YOUR HOURS PROMPTLY

WORKER NAME (Last, First, Middle Initial)

DAY \_\_\_\_\_

DATE \_\_\_\_\_

START \_\_\_\_\_

MEAL BREAK \_\_\_\_\_

STOP \_\_\_\_\_

REG. TIME \_\_\_\_\_

OVERTIME

ATTENDED (HOURS)

DAY \_\_\_\_\_

DATE \_\_\_\_\_

START \_\_\_\_\_

MEAL BREAK \_\_\_\_\_

STOP \_\_\_\_\_

REG. TIME \_\_\_\_\_

OVERTIME

ATTENDED (HOURS)

DAY \_\_\_\_\_

DATE \_\_\_\_\_

START \_\_\_\_\_

MEAL BREAK \_\_\_\_\_

STOP \_\_\_\_\_

REG. TIME \_\_\_\_\_

OVERTIME

ATTENDED (HOURS)

DAY \_\_\_\_\_

DATE \_\_\_\_\_

START \_\_\_\_\_

MEAL BREAK \_\_\_\_\_

STOP \_\_\_\_\_

REG. TIME \_\_\_\_\_

OVERTIME

ATTENDED (HOURS)

DAY \_\_\_\_\_

DATE \_\_\_\_\_

START \_\_\_\_\_

MEAL BREAK \_\_\_\_\_

STOP \_\_\_\_\_

REG. TIME \_\_\_\_\_